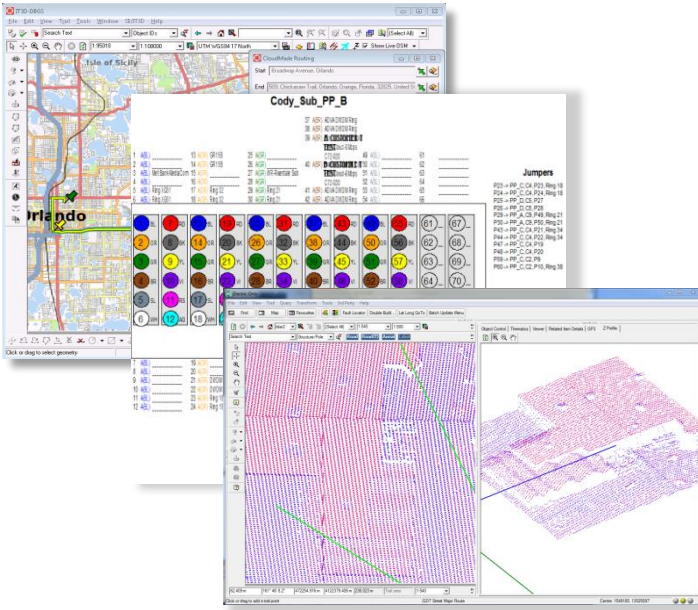




FCSI is celebrating 15 years of supporting a wide variety of customers and developing an even wider array of solutions for Smallworld Core Spatial Technology (CST). We constantly **push the technological limits** of Smallworld CST with ground breaking solutions. If you need it done – we will get it done.



## PNI Enhancements

**Patch Panel View** gives you one view of all pertinent information on a connected fiber pin. This includes sheath name, bundle color, fiber color, network usage, and jumper data.

**Internal Sheath and Splice Closures** allow you to quickly and easily model internal network connections. Integrates the Connection GUI and Splice Closure internals.

## Conflict Intervention

This easy to integrate functionality polices changes to your database. Based on your criteria, you can prevent changes that would be adversely impacted during merge-post-merge processing.

## OpenStreetMap Plug-in

FCSI has developed a plug-in that allows you to view, query, and download OpenStreetMap™ data.

- \* **Free Land Base Data.**
- \* **Geocoding**
- \* **Free Routing**
- \* **Satellite Imagery**
- \* **Optional Download of Vector Data**
- \* **Co-exist with GE's Google Add-on**

## LiDAR Tools

**Importer** stores all LiDAR data in modified TIN geometry.

**3D LiDAR Data Viewer** provides you the ability to filter the complex data and display it in a perspective view.

**Cylindrical Filtering** allows you to perform 3D queries for LiDAR data that is within a given distance of linear features.

**Z Application** allows you to assign elevations to existing features and modify existing DEM data.

## LeaDeRS™

A complete Leak Detection solution for Smallworld. Provides for storage and reporting of your Leak Survey data. This gives you the ability to quickly generate reports to meet regulatory requirements.

## Report Generation

Easily generate reports with only the data you need. This functionality is easily configurable and supports full Smallworld Explorer functionality.

**Web Reporting** is an enhancement to the Report Generator that allows easy Web based access to these reports and queries on all Smallworld objects.

## Smallworld Managed Services

FCSI provides 100% hands-off Smallworld configuration services. We provide everything from build and source control services to issue tracking and automated release creation. We work with you, GE, and other 3<sup>rd</sup> Party vendors to create a much more stable environment.



Solutions Provider  
GE Energy

[www.field-csi.com](http://www.field-csi.com)

[info@field-csi.com](mailto:info@field-csi.com)

(407)275-9351

Follow us on Twitter: @fieldcsi



# Tools and Plug-ins

FCSI is continually developing productivity tools for Smallworld™ Core Spatial Technology to benefit users, developers, and administrators.

## Real Time GIS

FCSI has developed functionality that allows you to display real time data on your GIS with no refresh delays or requests.

**Automatic Vehicle Location** functionality allows you to view the locations of your crews in real time for dispatching, emergency response, and disaster recovery. It can also be used to track other movable assets in the field.

**Global Positioning System** functionality shows and records your position on the Smallworld application in real time with automated map following. The GPS module can also integrate with other surveying technologies.

**Real Time Outage Management** displays the current state of your network in real time letting you visually understand the progress of outage recovery.

## End User Configurable Data Model

Extends the data definition of your objects by storing the data as CLOBs. Eliminates the use of the CASE tool and having to do CASE applies to the database. This functionality also exposes the data to the GE Smallworld Application within the editors, query tools, data explorer, and Magik Virtual Machine.

## External Data Object Editing

Allows you to have external references available from your Object Editor.

**External Catalogs** display external enumeration values so you do not need to reproduce internal enumerations and keep them updated.

**External References** show external data within the current object. For example, equipment inspection reports can be stored externally and seen within the equipment object editor.

(407)275-9351  
[www.field-csi.com](http://www.field-csi.com)  
[info@field-csi.com](mailto:info@field-csi.com)

## Enhanced Plotting Functionality

**Grid Overlays** allows you to easily add grid or tick overlays with detailed side and in-view labeling.  
**Table of Contents Indexing** automatically numbers and identifies the grid location of specific features.  
**Realistic Maps** – FCSI produces the best quality maps in the community.

## One-Click Geometry Update

Edits and updates geometry with 40% fewer mouse clicks, significantly increasing data editing productivity.

## Elevations Plug-in

**Automatic SRTM Download** gets you elevation data immediately.

**Automated Contour Generation.** Provides you the ability to create and store contour lines of your elevation data. Labeling the contours is a snap with the included tools.

**Elevation Application** quickly adds the 3<sup>rd</sup> dimension to your 2D data.

**Elevation Searching** allows you to query the database for records with geometries that have elevations that meet your criteria.

**Elevation Profiler** displays “Plan and Profile” sheet view of your line data.

## Services

We offer consulting, design, development, data conversion, test development, configuration management, and business process development services. We always strive to meet your needs as efficiently and effectively as possible.

**Upgrades** – We can support you at any stage of your 4.3 upgrade. We can help with development or do the complete upgrade.

©2016 Field Consulting and Services, Inc. Smallworld is a trademark of GE Energy. All other trademarks are the property of their respective holders